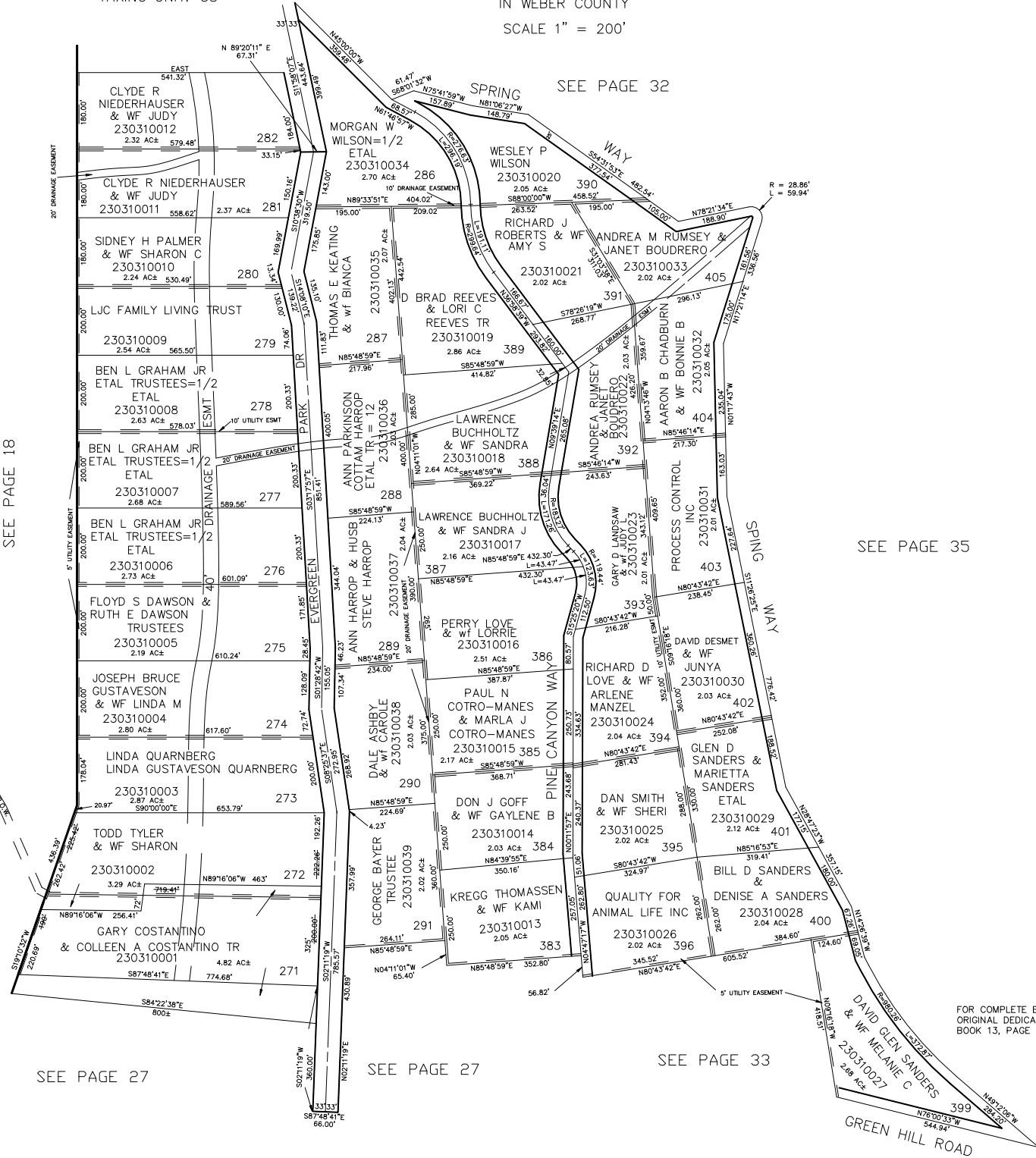


PART OF SEC. 29-30, T.7N., R.3E., S.L.B. & M.  
**EVERGREEN PARK SUBDIVISION NO. 1**  
LOTS 271-282, 286-291, 383-396, 399-405

TAXING UNIT: 58

IN WEBER COUNTY  
SCALE 1" = 200'



SEE PAGE 18

SEE PAGE 27

SEE PAGE 27

SEE PAGE 33

SEE PAGE 32

SEE PAGE 35

FOR COMPLETE ENG DATA SEE ORIGINAL DEDICATION PLAT IN BOOK 13, PAGE 60 OF RECORDS.